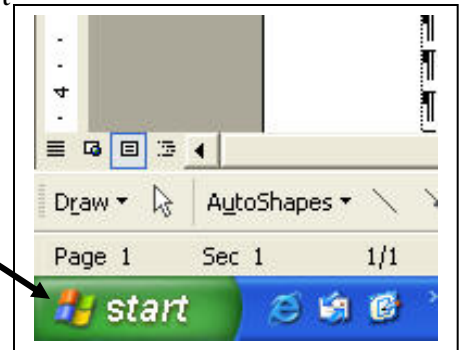


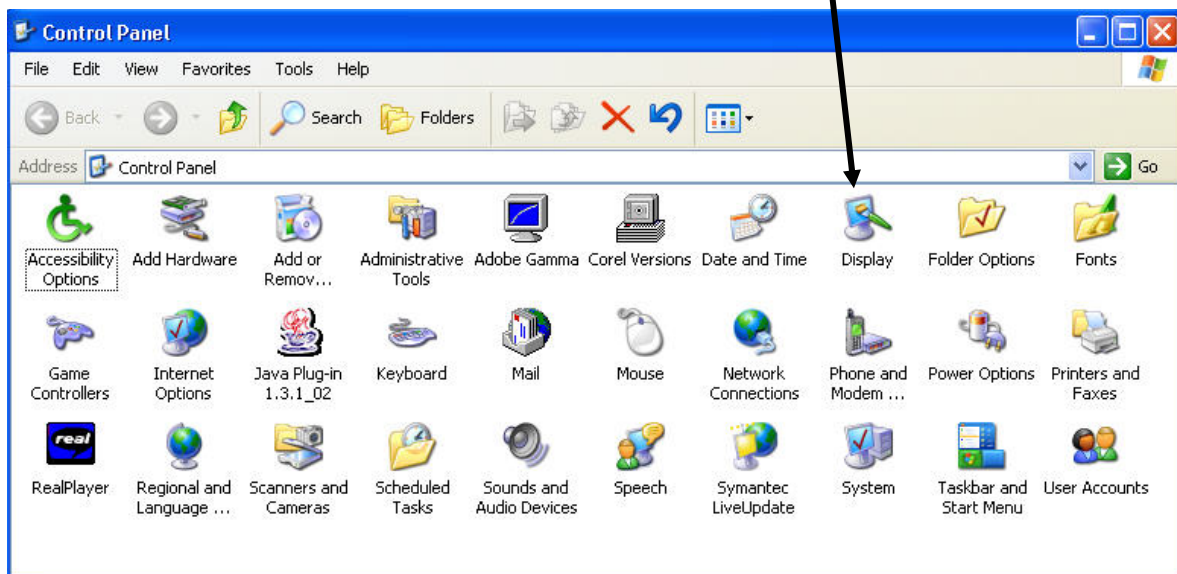
Creating A Password Protected Screen Saver

1. On the task bar at the bottom of your screen, click on the Start button in the lower left corner.
2. From the Start menu, click on the Control Panel Option.



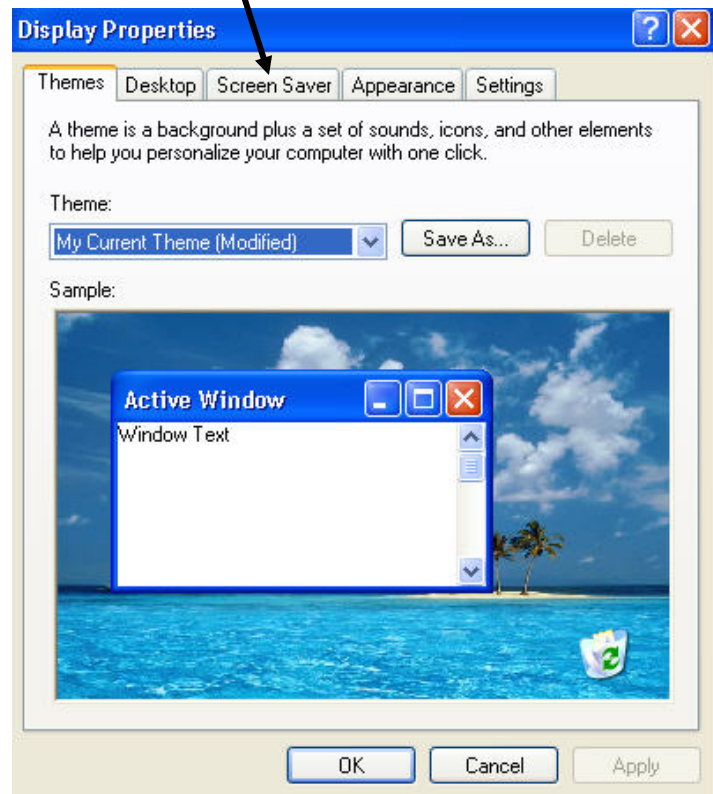
3. You will see this window if your View menu is set to Icons.

Double-click on the display icon.

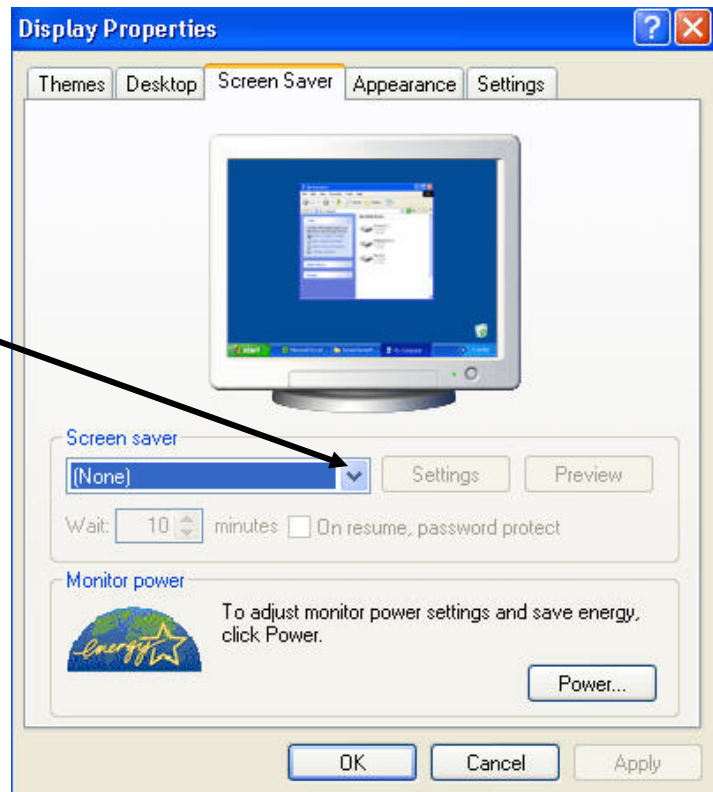


4. You will be presented with this dialogue box:

Click on the **Screen Saver** tab at the top of the dialogue box.



5. In this dialogue box, click on the choice chevron under “Screen saver” and pick one of your choice. (If you pick the name named “Blank” it will make it look as if your monitor is turned off – which might be more secure if you think about it.)



6. Once you pick your screen saver, several buttons will be activated.

Next to the Wait field, select the number of minutes you want to pass before the screen saver activates.

Click on the check box to the left of “On resume, password protect” (to put a check mark there). This will necessitate a password to stop the screen saver and operate your computer. Doing this will require your logon password to stop the screen saver.

Finally, click the OK button and you’re done.

