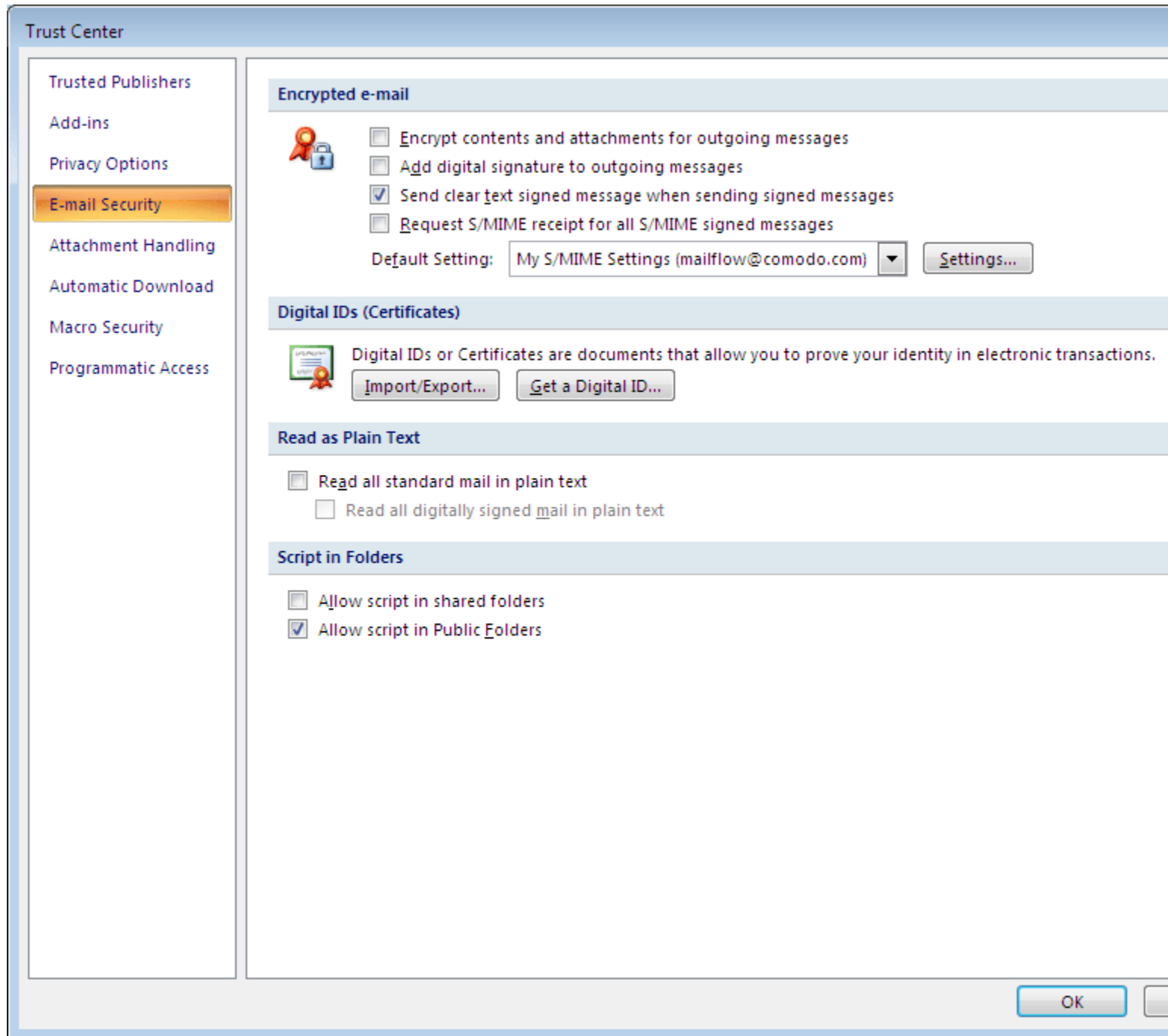


How do I assign a certificate (Digital ID) to use in Outlook 2007

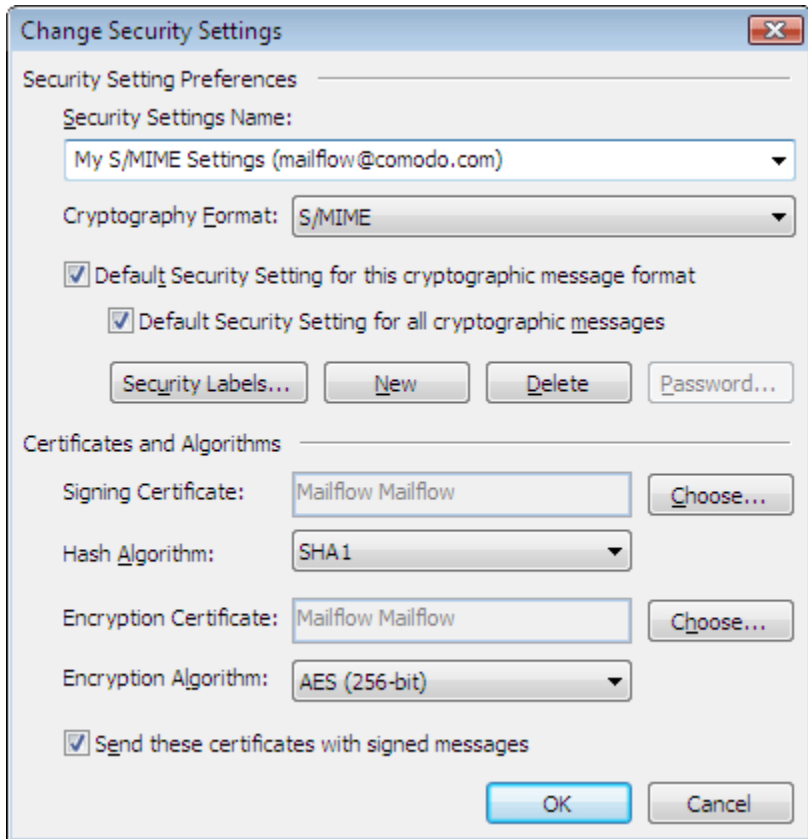
Solution Assigning a certificate in Outlook 2007 is only slightly different from older versions.

Previous versions set the certificate (Digital ID) in the 'Security' tab under 'tools', 'Options'.

Outlook 2007 has a new option 'Trust Center' under the 'tools' menu.
Then select 'E-mail Security'.



Click on 'Settings' to display the security settings.



Click 'Choose' to set the certificate (Digital ID) to use for 'Signing' and 'Encryption'